

Fig. 14.

Fig. 16.



FIGURE 1 is a front elevational view illustrating a guitar embodying my new design;

FIGURE 2 is an enlarged fragmentary perspective view;

FIGURE 3 is an enlarged fragmentary rear elevational view;

FIGURE 4 is an enlarged fragmentary side elevational view, illustrating the side which is not shown in FIGURE 2;

FIGURE 5 is an enlarged elevational view of the body, as viewed from the body end remote from the neck;

FIGURE 6 is an enlarged end elevational view of the body, as viewed from the body end adjacent the neck, the neck being shown in section at line 6-6 of FIGURE 4;

FIGURES 7-10 inclusive are, respectively, sectional views on lines 7-7, 8-8, 9-9 and 10-10 of FIGURE 3, and are for the purpose of illustrating surface contour;

FIGURE 11 is a rear elevational view of the entire guitar;

FIGURE 12 is a side elevational view, as viewed from the right in FIGURE 1;

FIGURE 13 is an enlarged sectional view taken on line 13-13 of FIGURE 12;

FIGURE 14 is a front elevational view of a second embodiment, which embodiment corresponds generally to that of FIGURES 1-13 except that the face and back of the body are not contoured;

FIGURE 15 is a rear elevational view of the second embodiment shown in FIGURE 14; and

FIGURE 16 is an enlarged side elevational view of the body, and a portion of the neck, of the second embodiment of FIGURES 14 and 15.

The stippling incorporated in the drawings is solely for shading purposes, and does not represent surface ornamentation.

The dominant features of the design reside in the portions shown in solid lines.

The design invention comprises a guitar body the outline of which is substantially as illustrated relative to both embodiments, in combination with an elongated narrow neck. FIGURES 1-12, inclusive, illustrate such invention as incorporated in a guitar the face and back of which are somewhat contoured, whereas FIGURES 14-16, inclusive, illustrate such invention as incorporated in a guitar the face and back of which are flat.

I claim:

The ornamental design for a guitar, substantially as shown and described.

References Cited

UNITED STATES PATENTS

D. 21,057	9/1891	Schumacher	-----	D56-1
D. 49,540	8/1916	Kirk	-----	D56-1
D. 83,848	4/1931	Cremer	-----	D56-1
D. 135,692	5/1943	Little	-----	D56-1
2,828,660	4/1958	Paulsen.		

BRUCE W. DUNKINS, *Primary Examiner.*

C. STEINKAMP, *Assistant Examiner.*

United States Patent Office

Des. 213,022
Patented Dec. 24, 1968

213,022

GUITAR

Roger R. Rossmeisl, Fullerton, Calif., assignor to Columbia Broadcasting System Inc., New York, N.Y., a corporation of New York

Filed Feb. 2, 1967, Ser. No. 5,665

Term of patent 14 years

(Cl. D56—1)

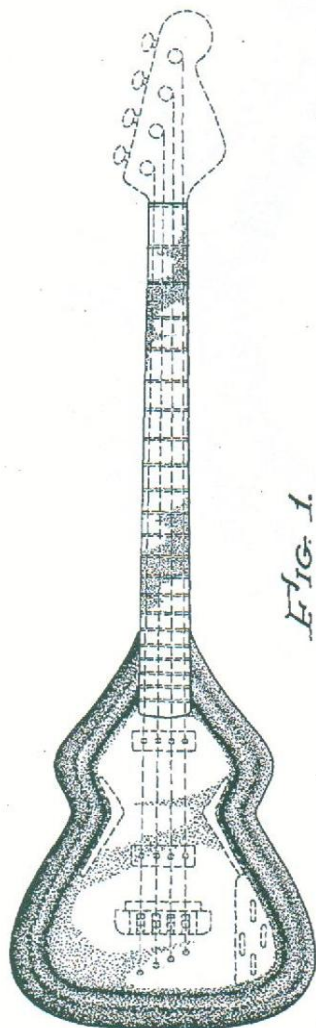
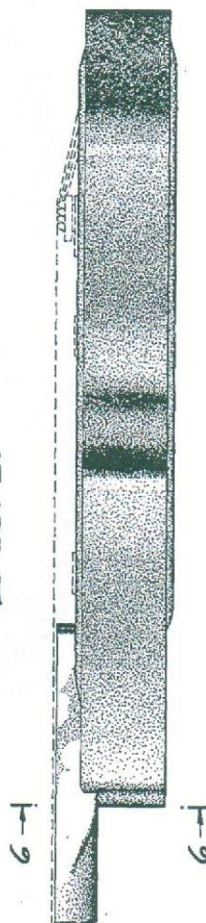
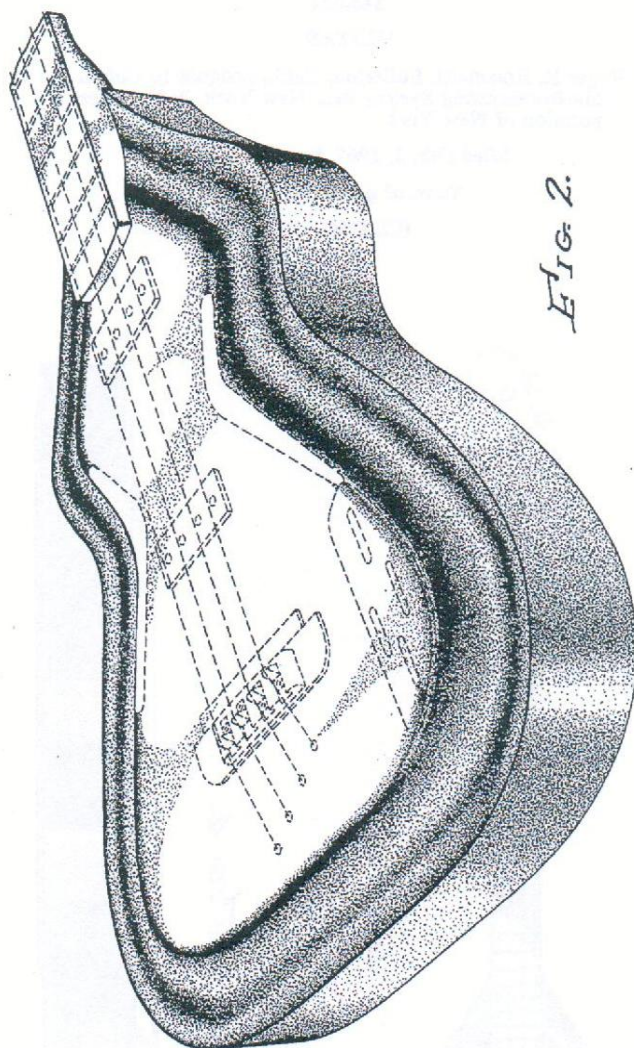


FIG. 1.

FIG. 4.





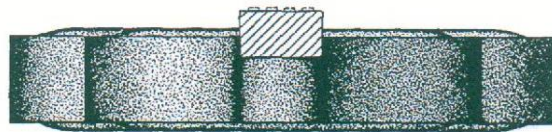
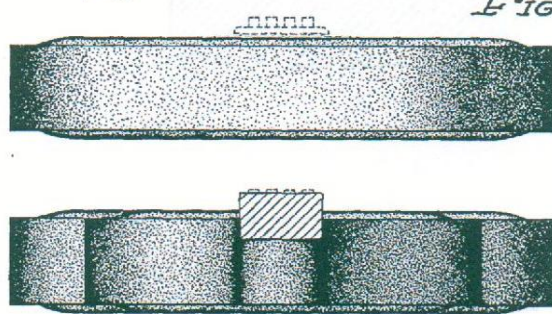
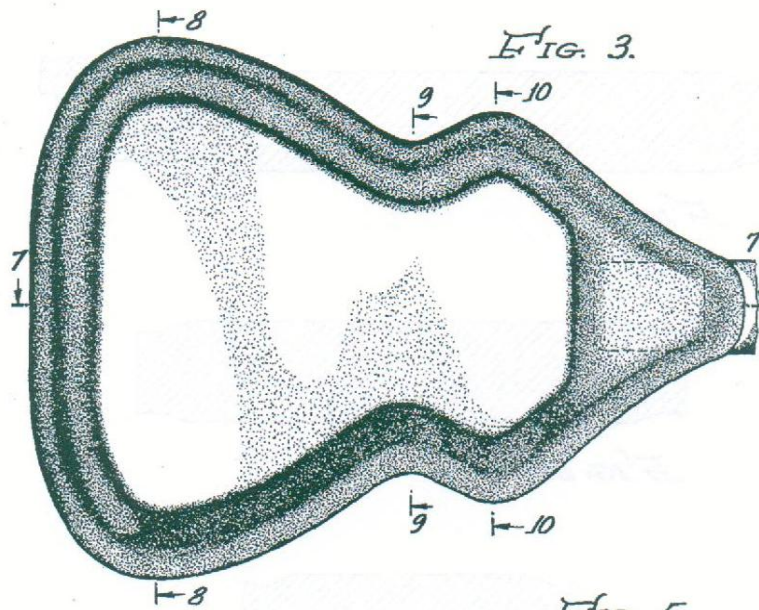




FIG. 7.



FIG. 8.



FIG. 9.



FIG. 10.

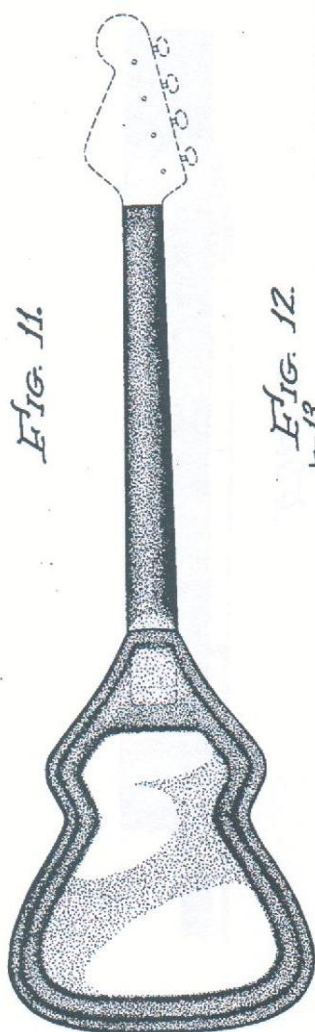


FIG. 12.



FIG. 13.



FIG. 15.

